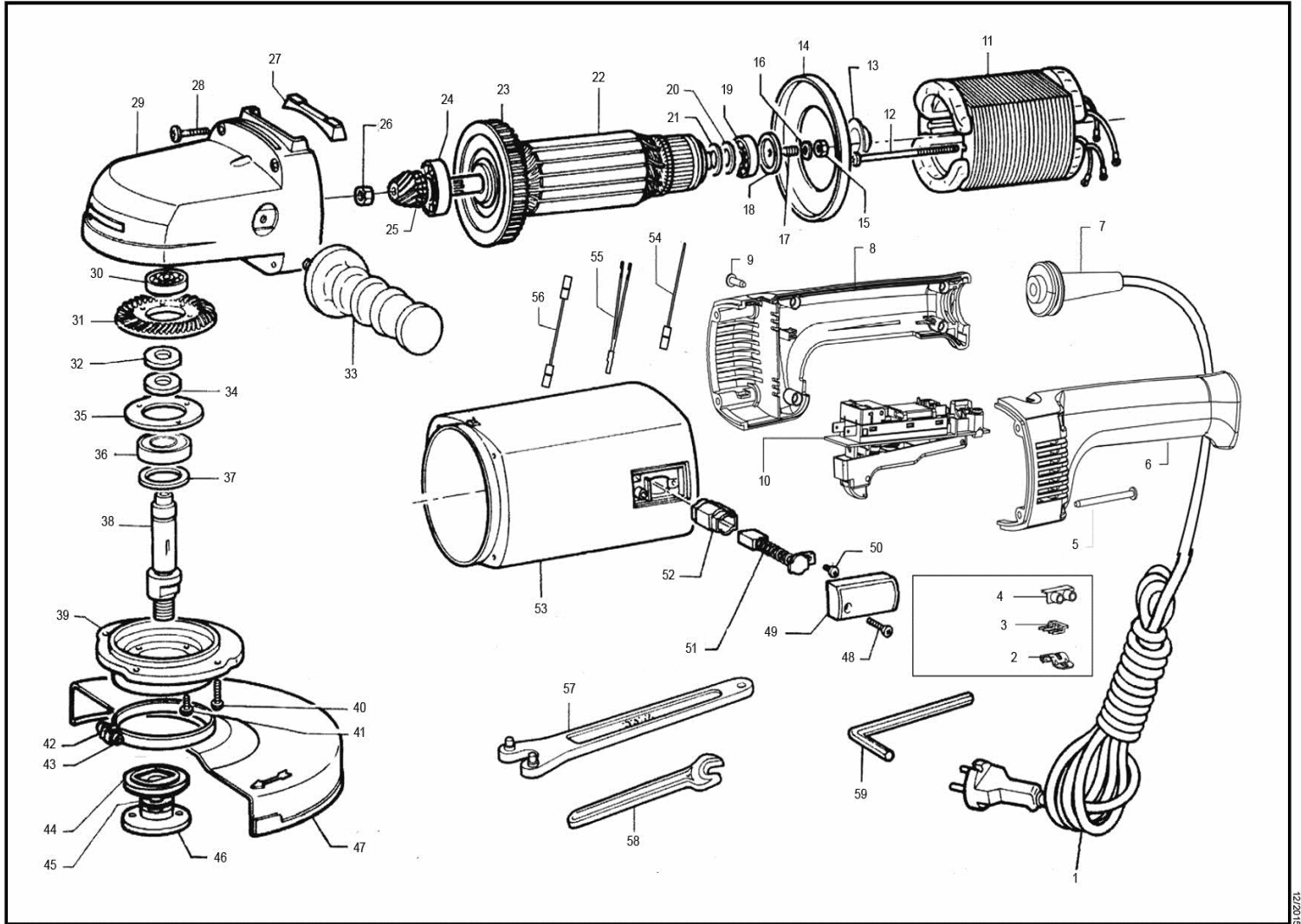


SMERIGLIATRICI ANGOLARI
ANGULAR GRINDER

GM 81N



ID	ITEM	DESCRIPTION
001	9C2X4,0N003	CABLE 2x4 (without plug) H 07
001	9C2X6,0N003	CABLE 2x6 (without plug) H 07
002	442.239	CABLE CLAMP
003	451.105	METAL PLATE FOR SWITCH L.T.
004	9.1574	NYLON CLAMP 6mm ² (OK434/1 NY LP)
005	9.651	SCREW 4,2x50 (8x2") T.C.C.
006	441.239	HALF-HANDLE LEFT
007	421.239	HANDLE GM62 V.72 (D.12,5)
007	422.239	HANDLE GM62 V.48 (D.12,5)
007	42.290	CABLE SLEEVE SS316
008	44.239	HALF-HANDLE RIGHT
009	9.688	SCREW 4,2x16 T.C.C. (8x5/8)
010	45.00.040	SWITCH 12+
011	2.038/042	STATOR (V.42)
011	2.038/048	STATOR (V.48)
011	2.038/072	STATOR (V.72)
011	2.038/080	STATOR (V.80)
011	2.038/110	STATOR (V.110)
012	9.695	SCREW 2,2x 6,5 (2x1/4") T.C.C.
013	319.092	MOTOR BODY NUT COVER
014	73.038	AIR BULKHEAD
015	84.91	NUT M8 GALVANIZE uni 5589
016	9.349	TOOTHED WASHER
017	9.698	GRAIN 8x14
018	341.40	THRUST WASHER
019	9.17/10	BEARING 629 ZZ-C3
020	9.304	STEEL WASHER d15 x 9,1 s 0,1
021	9.320	STEEL WASHER d23 x 9,1 s 0,3
022	1.092/042	ROTOR (V. 42)
022	1.092/048	ROTOR (V. 48)
022	1.092/072	ROTOR (V. 72)
022	1.092/110	ROTOR (V.110)
023	15.092	FAN 40 BLADES
024	9.36/10	BEARING NSK 6201 T1XZZC3E EA3S6
025	50.093	GEAR SET
026	55.092	NUT FOR NICKEL-PLATED ROTOR
027	65.038	TOOL SUPPORT
028	9.575	SCREW 4,8x50 (10x2") T.C.C. BURNISHED
029	32.092	GEAR BOX
030	9.27/10	BEARING 6001 ZZ-C3
031	50.093	GEAR SET
032	9.309	STEEL WASHER d22 x 15,2 s 0,3
033	81.326	COMPLETE SIDE HANDLE WITHOUT SPANNER
034	541.40	SPACER d 22 x 15,2 s 1
035	351.038	BEARING LOCKING FLANGE
036	9.26/10	BEARING 6202 ZZ-C3
037	333.038	d 28x15 s 0,3 STEEL WASHER
038	51.092	SPINDLE SHAFT
039	33.038	FLANGE
040	9.689	SCREW M5 x 14 T.C.C. 8G BURNISHED
041	9.637	SCREW M4 x 16 T.C.C. 8G BURNISHED
042	9.527	NUT M6
043	9.678	SCREW M6 x 25 T.B.E. 12K BURNISHED
044	936.092	SUPPORT WHEEL NUT
045	9.243	STEEL WASHER d42 x 22,5 s 0,4
046	934.092	LOCKING WHEEL NUT

ID	ITEM	DESCRIPTION
047	82.49	PROTECTION
048	9.614	SCRE M4 x 12 T.C.C. d7,7 BRN 8.8
049	48.048	BRUSH COVER
050	9.608	SCREW M4 x 6 T.C.C. TROP.+ROND
051	474.038/10	10 BRUSHES BLISTER GM62 BT
052	46.96	BRUSH HOLDER
053	31.092	GM61-GM81 MOTOR BODY
054	772.239	CABLE (faston fem. 6,3mm + copri faston + cap)
055	771.239	Y CABLE
056	77.239	CABLE (2 faston fem. 6,3mm + faston bag
057	836.24	SPANNER
058	83.13	SPANNER mm 17
059	9.1395	ALLEN SPANNER 5mm